

# Results of the 2015 CQ WW WPX SSB Contest

BY TERRY ZIVNEY\*, N4TZ

In the classic movie, Casablanca, Humphrey Bogart is asked why he came to Morocco. He replied, "My health; I came to Casablanca for the waters." This year, three groups of avid radio amateurs descended on Morocco, searching for where the radio waves wash on shore, thirsting for QSOs. The teams at CN2AA, CN3A, and 5E5E combined to put nearly 40,000 QSOs into their logs in just one weekend.

A record 5,872 logs were received in 2015, up from 5,500 logs received last year. Thousands more stations participated in the contest: Over 2,800 stations appeared in at least 50 of the logs we received, while nearly 6,400 stations made at least 20 QSOs in the contest but didn't send in a log.

You can find out how you, and your competitors, did at <http://www.cq-amateur-radio.com>, where the full line scores of all the categories will be posted. The scores are also on the WPX contest website at <http://www.cqwp.com>, along with a searchable database of scores for all past CQ WPX contests. You will also find public logs there from all the competitors to help you identify missed opportunities.

## Single-Operator All Band

John, W6LD, operating as P4ØL, just missed breaking the South American record and also fell short of Tom, W2SC, the repeat winner from 8P5A. Krassy, K1LZ, won the U.S., the only one of the top 10 U.S. scores made without the benefit of a fancy two letter prefix. Davor, 9A1UN, sported a special callsign (9A73A) to lead the European crowd. VY2ZM had the top North American score, in what may have been Jeff's last big effort from his fabulous Prince Edward Island location.

## Single-Operator Single Band

ZY2B (South America) ran away with the 10-meter category, which featured top scores from around the world:



Photo A. Andy, N9TGR, used his FT1000D and SteppIR to pile up over 1 million points, low power 15 meters assisted.

5W1SA (Oceania), ZS9Z (ZS1OIN, op) (Africa), OK4PA (Europe), and KZ5MM (W5PR, op) (North America). 4L8A and JA7NVF were chasing CR6T (CT1ESV, op) for the 15-meter plaque. Neither KZ5MM (10 meters), KU2M (15 meters), nor W5WMU (20 meters)

approached any of KQ2M's U.S. single-band records. OK1RF returned to CS2C to break the European 20-meter record he set just last year, but CR6T (CT1ESV) failed to surpass the mark he set the last time out on 15 meters.

## Single-Operator Low Power

By far, the most popular category continues to be single-operator unassisted low power all band. Didier, FY5FY, smashed the world record previously held by P4ØA. Kevin, ZF2DX, set a new North American record, coming in second overall. OM2VL was the top European low-power operator, while WA1Z took advantage of N1UR's move to high power to capture the U.S. title.

You can have a lot of high-powered fun running low power on a single band, especially if you choose the right band. TO2A's (N6KT, op) score would have been second place in the high-power, 10-meter category. Despite conditions (especially Sunday) being down from last year, 10-meter low power was the favorite single-band category.

## Single-Operator Assisted

1,913 entries reported using QSO alerting assistance. Worldwide, CQ3L



Photo B. The World Rookie champion, Grecia, YY1LY, handled the pileups on 15 meters like a veteran.

# Field Gear That Goes The Distance!



## FT-991

WIRES-X

New generation HF/VHF/UHF

All Mode Compact Base Station Transceiver

- 100 Watts (2 Meter / 70 Centimeter: 50 Watts) of Solid Performance
- Roofing Filters 3 kHz and 15 kHz as standard equipment
- IF DSP is Famous for Superb Interference Rejection
- Advanced Spectrum Scope Function With Waterfall Display
- 3.5 inch TFT Full-Color Touch Panel Operation



## FT-450D

HF/50 MHz 100W

Easy to Operate All Mode Transceiver

- The Real DX Receiver Design for Amateur Operators
- Built-in HF/50 MHz Automatic Antenna Tuner
- Proven performance and technology with YAESU IF DSP
- The 4 Pole Roofing Filter (MCF) and 8 Band pass Filter at the RF stages
- Rugged aluminum die-cast with large cooling fan
- Ultra Compact Design (9.0" x 3.3" x 8.5" WHD)



## FT-857D

The World's Smallest HF/VHF/UHF  
Mobile Transceiver

- Ultra-Compact Package (6.1" x 2.0" x 9.2" WHD)
- Ideal for Mobile or External Battery Portable Work
- The 4 Pole Roofing Filter (MCF) and 8 Band pass Filter at the RF stages
- Big Radio Tuning Dial and Outstanding Ergonomics
- High-Performance Mobile Operation



## FT-817ND

The Ultimate Backpack,  
Multi-Mode Portable Transceiver

- Incredibly Small Size (5.3" x 1.5" x 6.5" WHD) and Light Weight (under 2 pounds)
- Ni-MH Battery Pack FNB-85 and Battery Charger PA-48 Included
- Covering the HF, VHF, and UHF Bands
- Compact Design Yields up to 5 Watts
- SSB, CW, AM, FM, Packet, or SSB-based Modes like PSK31

**YAESU**  
The radio

YAESU USA  
6125 Phyllis Drive, Cypress,  
CA 90630 (714) 827-7600

For latest Yaesu news, visit us on the Internet: <http://www.yaesu.com>

Specifications subject to change without notice. Some accessories and/or options may be standard in certain areas. Frequency coverage may differ in some countries. Check with your local Yaesu Dealer for specific details.



Photo C. Mark, KK4TXZ, made many memories in his first CQ WPX contest, and wins the U.S. Rookie plaque to commemorate them. He did it with a Yaesu FT-897, end-fed wire, and 40/80 dipole. Well done!

(DJ8OG, op) squeaked to a new record for high-power all-band assisted, edging out PJ4DX, while KB3WD was again tops in the U.S. A lot of activity took place in the assisted single-band categories as well. LR1E (LW6DG, op) took 10-meter honors. 4X7R (4X6FR, op) edged past a swarm of Europeans on 15 meters, S56M beat OL9A on 20 meters, SN3A took home the prize on 40 meters, while OK8WW and S57O were the low-band winners. K3EST/6 (20 meters) and N6BV (15 meters) had notable U.S. single band assisted scores.

HI3TEJ set a new record while winning the low power all band assisted class, while K4DMR held off N5DO for stateside bragging rights, and EC2DX overwhelmed the European crowd. YV1KK (10 meters), YY1YLY (15 meters), 4ZØDX (20 meters), RC7KY (40 meters), E77C (80 meters), and EU2EU (160 meters) were the low power single band assisted winners. N9TGR used 15 meters to top the U.S. low power single band assisted entries (Photo A).

## Single-Operator QRP

The winning scores may have only been about half as big as last year, but 255 very low-powered operators took advantage of the still decent conditions. Last year, with great 10-meter openings, U.S.

## 2015 WPX SSB TROPHY WINNERS AND DONORS

**SINGLE OPERATOR ALL BAND**

**WORLD:** Stanley Cohen, W8QDQ Trophy. Won by: **8P5A** operated by Tom Gogens, W2SC  
**WORLD Low Power:** Caribbean Contesting Consortium Trophy. Won by: **Didier Bironneau, FY5FY**  
**WORLD QRP:** Phil Krichbaum, NØKE Trophy. Won by: **Frank Paulus-Rieth, DL8LR**

**USA:** Atilano de Oms, PY5EG Trophy. Won by: **Krassimir Petkov, K1LZ**  
**USA Low Power:** Terry Zivney, N4TZ Trophy. Won by: **Bob Raymond, WA1Z**  
**USA QRP:** Doug Zwiebel, KR2Q Trophy. Won by: **W6QU** operated by Bill Parker, W8QZA  
**USA Zone 3 High Power:** Lauri "Mac" McCreary, KG7C Trophy. Won by: **KW7Y** operated by Mitch Mason, K7RL  
**USA Zone 3 Low Power:** Buz Reeves, K2GL Memorial Trophy. Won by: **AD7JP** operated by Bill Conwell, K2PO  
**USA Zone 4 High Power:** Society of Midwest Contesters Trophy. Won by: **George A. DeMontroind III, NR5M**  
**USA Zone 4 Low Power:** Society of Midwest Contesters Trophy. Won by: **Greg Chapoton, NA8V**  
**USA Zone 5 High Power:** Charles Wooten, NF4A Trophy. Awarded to: **WY3P** operated by Kamal Sirageldin, N3KS

**EUROPE High Power:** Dave Siddall, K3ZJ Trophy. Won by: **9A73A**, operated by Davor Kucelin, 9A1UN  
**EUROPE Low Power:** Ed Sawyer, N1UR Trophy. Won by: **Vegh Laszlo, OM2VL**

**AFRICA:** Peter Sprengel, PY5CC Trophy. Won by: **Vadim Ovsyannikov, CT9/R9DX**  
**ASIA:** Chris Terkla, N1XS Trophy. Won by: **Anatoly Polevik, RC9O**  
**NORTH AMERICA:** Albert Crespo, F5VHJ Trophy. Awarded to: **TO4C**, operated by Richard Brokenshaw, M5R1C\*  
**NORTH AMERICA Low Power:** Ed Sawyer, N1UR Trophy. Won by: **Kevin Stockton, ZF2DX**  
**NORTH AMERICA QRP:** Phil Krichbaum, NØKE Trophy. Won by: **Marco A. Soto, XE2S**  
**OCEANIA High Power:** Phillip Frazier, K6ZM Memorial Trophy. Won by: **ZM2IO**, operated by Holger Hannemann, ZL3IO  
**OCEANIA Low Power:** YB Land DX Club Trophy. Won by: **Yohanes Budhiono, YB2DX**  
**SOUTH AMERICA:** Andrew Faber, AE6Y Trophy. Won by: **P4ØL**, operated by John A. Fore, W6LD  
**SOUTHERN CONE (CE, CX, LU) Low Power:** LU Contest Group Trophy. Won by: **Lucas Maiorov, LU1FAM**  
**CANADA High Power:** Saskatchewan Contest Club Trophy. Won by: **VY2ZM**, operated by Jeffrey T. Briggs, K1ZM  
**CANADA Low Power:** Paul Cassel, VE3SY Memorial Trophy by Contest Club Ontario. Won by: **Michael Smith, VE9AA**  
**JAPAN:** Hamad Alnusif, 9K2HN Trophy. Won by: **Masaki Okano, JH4UYB**  
**ASEAN (3W, 9M, 9V, DU, HS, V85, XU, XW, XZ, YB) High Power:** Karsono Suyanto, YBØNDT Trophy. Won by: **XW1IC**, operated by Champ Muangamphun, E21E1C  
**ASEAN (3W, 9M, 9V, DU, HS, V85, XU, XW, XZ, YB) Low Power:** YB Land DX Club Trophy. Awarded to: **Edi Hari Purnomo, YB3EDD**

**SINGLE OPERATOR, SINGLE BAND**

**WORLD:** Steve Merchant, K6AW Trophy. Won by: **Guilherme Vaz, ZY2B (28 MHz)**  
**WORLD 28 MHz Low Power:** Six Stars Contest Station LS1D Trophy. Won by: **TO2A**, operated by Rich Smith, N6KT  
**WORLD 21 MHz:** Stuart Santelmann KC1F Memorial (Gene Shablygin, W3UA/RA3AA sponsor) Trophy. Won by: **CR6T** operated by Antonio Santos, CT1ESV  
**WORLD 14 MHz:** Lynn Schriener, W5FO Memorial by N5RZ Trophy. Won by: **CS2C** operated by Jiri Pesta, OK1RF  
**WORLD 7 MHz Low Power:** Neal Campbell, K3NC Trophy. Won by: **Henryk Prasal, SP1FPG**  
**WORLD 1.8 MHz:** UA2 Contest Club Trophy. Won by: **Bostjan Sever, S56P**

**USA 28 MHz:** Maurice Schietecatte, N4LZ Trophy. Won by: **KZ5MM** operated by Chuck Dietz, W5PR  
**USA 21 MHz:** Maurice Schietecatte, N4LZ Trophy. Won by: **Peter Bizlewicz, KU2M**  
**USA 14 MHz:** Charles Wooten, NF4A Trophy. Won by: **Pat Sonnier, W5WUU**  
**USA 7 MHz:** Yankee Clipper Contest Club Trophy. Won by: **Stephen Werner, AG4W**  
**USA 3.7 MHz:** Bernie Welch, W8IMZ Memorial Trophy. Won by: **Steven Sussman, W3BGN**

stations were prominent in the top QRP ranks. Not so this year. DL8LR was world-high QRP all bands, beating out CT1BXT. W6QU (W8QZA, op) was the top U.S. finisher. ED3V (F4BKV, op) edged out OE2S (OE2VEL, op) among the assisted QRP all band scorers.

ZS6DX took advantage of the more reliable north-south propagation on 10 meters to make the highest score among unassisted QRP single banders, while MWØJRX and JR3RWB used assistance to post large assisted QRP scores.

## Overlay Categories

The Rookie overlay category was established to encourage recently-licensed hams to try the contest experience. This year, 306 entries checked this overlay category, up from 249 last year. Grecia, YY1YLY, operated 15 meters low power assisted to win the World Rookie plaque (Photo B). KK4TXZ ran all band low power assisted to lead the U.S. Rookies (Photo C). CA7CAQ had an outstanding 10-meter

low power score, without spotting assistance. IT9EWR was the top European rookie.

The Tribander/Single-Element overlay category was intended to provide a measuring tool for average stations. Still, the best operators with good locations for their tribanders can achieve huge scores. 857 entrants selected this overlay. 5B4WN traveled to 6Y4W for the win but narrowly missed besting CT9L's 2008 record. ZF2DX had a huge low-power score, but failed to best P4ØA's 2003 mark. N4PN borrowed the KJ8O callsign to lead the U.S. Tribander/Single-Element all band competitors. N4BP, using the WN1GIV callsign on 10 meters, won with less than 10 percent of his score last year. KT4ZB again had the highest U.S. low-power score. RJ4P far outpaced his European competitors.

## Multi-Operator

The guys at P33W substantially improved upon last year's performance, but were unable to recapture the multi

EUROPE: 28 MHz High Power: Chuck Dietz, W5PR Trophy. Won by: Pavel Prihoda, OK4PA  
EUROPE 14 MHz High Power: SJ2W Contest Team Trophy. Awarded to: Vrbovszki Pal, HA8JV\*  
EUROPE 3.7 MHz High Power: Ranko Boca, 4O3A Trophy. Won by: Tomas Kavalir, OK1GTH

#### SINGLE OPERATOR ASSISTED

WORLD: D4C Contest Team Trophy. Won by: CQ3L operated by Matthias Kromm, DJ8OG  
WORLD QRP: Explorers Radio Club Trophy. Won by: ED3V operated by Vincent Colombo, F4BKW  
USA: Alabama Contest Group Trophy. Won by: Vitaly Galilov, KB3WD  
EUROPE: Martin Huml, OLSY Trophy. Won by: RT4F operated by Pavel Bogachev, RK4FD  
OCEANIA: Sid Caesar, NH7C Trophy. Won by: Joel Chalmers, NH2DX

#### OVERLAY CATEGORIES

WORLD Tribander/Single-Element: Nate Moreschi, N4YDU Trophy. Won by: 6Y4W operated by Marios Nicolaou, 5B4WN  
USA Tribander/Single-Element: Paul H. Newberry, Jr., N4PN Trophy. Won by: KJ8O operated by Paul H. Newberry, Jr., N4PN  
USA Tribander/Single-Element Low Power: Alex M. Josza, KG1E Trophy. Won by: Jere Connan, KT4ZB  
Europe Tribander/Single-Element: Roger Miner, K1DQV Trophy. Won by: Igor Vachevsky, RJ4P  
WORLD Rookie: Val Edwards W8KIC Memorial (K3LR sponsor) Trophy. Won by: Grecia Azuaje, YY1YLY  
USA Rookie: Joe Cazzalino, WX4CAZ Trophy. Won by: Mark Felty, KK4TXZ

#### MULTI-OPERATOR, SINGLE-TRANSMITTER

WORLD: Latvian Contest Club Trophy. Won by: P33W operated by LY4AA, R3DCX, UA4FER, RW4WR, and RA3AUU  
WORLD Low Power: Hoosier DX and Contest Club Trophy. Won by: HI0UD operated by HI3CC, HI3TT, WP3A, HI3LFE, HI3K, and HI8K  
USA: Steve Bolia, N8BJQ Trophy. Won by: K0DU operated by K0DU, K0UK and K0CL  
USA Low Power: Matt Tatro, NM1C Trophy. Won by: NM1C operated by NM1C, N1DBL, KB1YJI and N1UZ  
AFRICA: Rhein Ruhr DX Association Trophy. Won by: 7QAA operated by HB9OCR, DD5ZZ, G8APB, AND K9APW  
ASIA: W2MIG Memorial (NX7TT Sponsor) Trophy. Awarded to: RT0F operated by RC0F, RG0F and RT0F\*  
EUROPE: Tonno Vahk, ES5TV Trophy. Won by: TM6M operated by F1AKK, F4DXW, F4FFZ, and F8DBF

#### MULTI-OPERATOR, TWO-TRANSMITTER

WORLD: Ken Adams, K5KA Memorial Trophy. Won by: D4C operated by I4UFH, IZ4DPV, HB9DUR, and E77DX  
USA: Florida Contest Group Trophy. Won by: KD4D operated by KD4D, W2CDO, KE3X, AJ3M, N3QE, W3IDT and K2YWE  
AFRICA: Walter Skudlarek, DJ6QT Trophy. Awarded to: 5E5E operated by EA8RM, EA9LZ, LU9ESD, LU8EOT, M0DXR, OH0XX and W7EJ\*  
EUROPE: North Pole Contest Group Trophy. Won by: I19P operated by IT9EQO, IT9CHU, IT9WNU, IT9CJC, IT9AUG, IT9GSF, IT9HBT, IW9FRA, IZ8JAI, I4AVG, IK1HJS, IV3YYK, IV3SDE and IV3TMV

#### MULTI-OPERATOR, MULTI-TRANSMITTER

WORLD: Gail M. Sheehan, K2RED Trophy. Won by: CN2AA operated by RL3FT, UA3ASZ, RA3CO, RX3APM, RW7K, UB7K, UN9LW, RM9I, RU9I, RV3MA, R2DBB, RZ3LC, RO4F and RM2U  
USA: Dale Hoppe, K6UA Memorial Trophy. Won by: WX3B operated by WX3B, N9IVN, K3AJ, WR3R, WA3AER, K1RH, NY3A, KC3BWA, KK4ODQ, N8II, KC3DMA, and Elizabeth  
EUROPE: Rick Dougherty, NQ4I Trophy. Won by: 9A1A operated by 9A9A, 9A5W, 9A6A, 9A7R, 9A2DQ, 9A7C, 9A8A, 9A2EU, 9A7DR, 9A5E, 9A7MIM, 9A5CKK, and 9A3GDZ

#### CONTEST EXPEDITION

WORLD: C6APR Memorial by Andre Coelho, PT7ZZ Trophy. Won by: 9N7CC operated by SQ9CNN

*\*Denotes awarded to runner-up in category*

operator single transmitter record that CN2AA took from them last year. K0DU in Colorado had the top U.S. M/S score. The ops at HI0UD raised the bar in our newest category, multi single low power, with ED1B close on their heels, also beating last year's record. NM1C set the new U.S. low-power mark. A total of 76 stations tried this category, compared to the 184 stations in the established high-power category.

D4C led the pack of 66 stations in the multi-two category, with another new record. 5E5E and CN3A also bettered the previous mark. CN2AA blew away the multi-multi category, nearly doubling the score of runner-up PJ2T. WX3B led the six U.S. stations entering this category.

## Records

Propagation during a contest is always good to someplace (a corollary of Gooch's Law: "RF has to go somewhere.") Those in the right place this time to make new records included FY5FY (World SOABLP), CQ3L (World

Assisted), D4C (World M/2), CN2AA (World M/M), 4L8A (Asia 21), CS2C (Europe 14) and P33W (Asia M/S).

Records for all of the various categories and countries can be found at <<http://www.cqwp.com/records.htm>>.

## Final Observations

The complete line scores traditionally found at the end of the magazine have been moved to CQ magazine's website <<http://www.cq-amateur-radio.com>>, as well as the contest website, <<http://www.cqwp.com/results>>. In addition to the searchable databases on the contest website, complete PDF versions of the printed article, including line scores, are available through both websites. Assisted stations' line scores are found immediately after the single-operator unassisted line scores for each call area or country. Logs received after the official deadline are shown in italics in the line scores and are not eligible for any awards.

There are a number of volunteers who make this contest possible. K5ZD,



Authorized Distributor for



Linear Amplifiers

ExpertLinears.com  
281-259-7877

Fully Automatic  
Solid State Amplifiers!

EXPERT 1K-FA ★ EXPERT 2K-FA  
EXPERT 1.3K-FA

THE MOST  
TECHNOLOGICALLY  
ADVANCED IN THE WORLD!



Includes Power supply & Fully Automatic  
Antenna Tuner – Fully Remoteable

Expert Linears America, LLC Offers  
SALES & EXPERT SERVICE

- ★ SPE Factory-trained with 3 1/2 years repairing Expert Amps/Linears
- ★ Fast Turnaround
- ★ Over 50 years RF Experience
- ★ Over 60 years ham radio repair experience

See Hamfest **EVENTS** ON OUR WEBSITE

EXPERT LINEARS  
AMERICA, LLC

PO Box 1224  
Magnolia, TX 77355  
Contact: Bob Hardie W5UQ  
Bob@ExpertLinears.com



## On the Cover

The latest “Star Wars” movie is due out later this year, but our cover ham this month — Alden Oyer, AG5S, of Santa Fe, New Mexico, worked on the real thing ... not the movie, but the 1980s missile defense program. That was one of a variety of projects, including nuclear non-proliferation, on which Alden worked during a career at the Los Alamos National Laboratory, where he made good use of his degrees in electrical engineering and nuclear physics. He retired in 2010 and now considers himself a full-time “professional amateur radio operator.”

In our cover photo, Alden is checking on his yet-to-be-reassembled KLM KT-34XA tri-band beam, which he took apart before moving down the street a few years ago. He says he’s in no rush to reassemble it because he’s doing just fine so far working DX with a variety of vertical antennas. Alden’s an Elecraft fan — his main station is a K3 with matching amplifier, antenna tuner, and P3 panadapter. When he travels, he takes along a KX-3 with similar accessories. His home station is completely integrated with the Internet, and he uses the DXLab suite of software to control his station, log his contacts and more. Alden says he enjoys DXing, contesting and public service work. He operates mostly digital modes, with some SSB and CW thrown in for variety and particularly enjoys working special event stations. Last year, he was one of the operators for W1AW/5 during the ARRL’s centennial celebration. Alden is also active in several local clubs and is on the committee for the annual Duke City Hamfest. (Cover photo by Larry Mulvehill, WB2ZPI)

K3WW, and WI9WI provide the skilled personal analysis of the logs that computers alone cannot provide. The software support from K1EA and K5TR enables the timely processing of your logs. Barry, W5GN, prints and mails your certificates and Doug, K1DG, handles the plaques, both in a very timely manner. Paper logs were manually entered by WU9D, KD9MS, KC9EOQ,

K9PW, W7KAM, WI9WI, and N4TZ. K5ZD runs the outstanding CQ WPX website.

The 2016 CQ WPX SSB Contest will be held **March 26-27**. The log deadline is five days after the conclusion on the contest, **April 1 at 2359Z**. Updated rules will be published in the January issue of CQ and will be posted on the websites mentioned above.

## CQ WW WPX SSB CONTEST ALL-TIME RECORDS

The contest is held each year on the last full weekend of March. The All-Time Records will be updated and published annually. Data following the call: year of operation, total score, and number of prefix multipliers.

| WORLD RECORD HOLDERS              |             |             | U.S.A. RECORD HOLDERS             |            |             |            |      |
|-----------------------------------|-------------|-------------|-----------------------------------|------------|-------------|------------|------|
| Single Operator                   |             |             | Single Operator                   |            |             |            |      |
| 1.8                               | CN2R ('07)  | 1,613,955   | 399                               | 1.8        | K1ZM('95)   | 327,712    | 308  |
| 3.5                               | CN2R ('06)  | 11,849,076  | 894                               | 3.5        | K1UO('10)   | 2,161,782  | 602  |
| 7.0                               | CN2R ('05)  | 14,724,696  | 931                               | 7.0        | WU3A/1('11) | 4,731,424  | 796  |
| 14                                | CN2R ('08)  | 15,778,840  | 1199                              | 14         | KQ2M('09)   | 7,034,082  | 1082 |
| 21                                | CN2R ('11)  | 20,704,164  | 1443                              | 21         | KQ2M/1('11) | 9,591,670  | 1210 |
| 28                                | D4C ('14)   | 17,885,556  | 1404                              | 28         | KQ2M/1('14) | 8,264,263  | 1141 |
| AB                                | CN2R ('13)  | 30,683,396  | 1433                              | AB         | K1LZ('11)   | 15,921,388 | 1246 |
| LP                                | FY5FY ('15) | 17,380,143  | 1251                              | LP         | NV1N('14)   | 7,005,087  | 989  |
| QRP                               | HC8A ('94)  | 7,520,562   | 714                               | QRP        | KR2Q('00)   | 2,688,158  | 649  |
| Assisted                          | CQ3L ('15)  | 23,505,780  | 1388                              | Assisted   | K11G('11)   | 13,075,616 | 1268 |
| Multi-Operator Single Transmitter |             |             | Multi-Operator Single Transmitter |            |             |            |      |
| CN2AA ('14)                       |             | 52,766,482  | 1759                              | WW2DX('12) |             | 19,167,080 | 1373 |
| Multi-Operator Two Transmitter    |             |             | Multi-Operator Two Transmitter    |            |             |            |      |
| D4C ('15)                         |             | 86,622,448  | 1936                              | K1LZ('10)  |             | 30,393,480 | 1560 |
| Multi-Operator Multi-Transmitter  |             |             | Multi-Operator Multi-Transmitter  |            |             |            |      |
| CN2AA ('15)                       |             | 121,620,720 | 2040                              | NQ4I('14)  |             | 31,335,980 | 1690 |

| CLUB RECORD                | QRP RECORD | WPX (Prefix) RECORD |
|----------------------------|------------|---------------------|
| Contest Club Finland ('00) | HC8A('94)  | ES9C('14)           |
| 250,320,141                | 7,520,562  | 2057                |

## CONTINENTAL RECORD HOLDERS

| AFRICA        |            |            | SOUTH AMERICA                     |                                  |                |             |      |
|---------------|------------|------------|-----------------------------------|----------------------------------|----------------|-------------|------|
| 1.8           | CN2R('07)  | 1,613,955  | 399                               | 14                               | KH6ND('03)     | 6,493,727   | 887  |
| 3.5           | CN2R('06)  | 11,849,076 | 894                               | 21                               | AH7DX('00)     | 7,645,990   | 890  |
| 7.0           | CN2R('05)  | 14,724,696 | 931                               | 28                               | TX0DX('00)     | 12,049,422  | 847  |
| 14            | CN2R('08)  | 15,778,840 | 1199                              | AB                               | KH7X('11)      | 20,676,524  | 1244 |
| 21            | CN2R('11)  | 20,704,164 | 1443                              | ASIA                             |                |             |      |
| 28            | D4C('14)   | 17,885,556 | 1404                              | 1.8                              | *YM0T('05)     | 486,846     | 222  |
| AB            | CN2R('13)  | 30,683,396 | 1443                              | 3.5                              | H2T('10)       | 3,067,296   | 534  |
|               |            |            |                                   | 7.0                              | 5B/KC2TIZ('10) | 6,761,872   | 754  |
|               |            |            |                                   | 14                               | P33W('10)      | 8,004,130   | 1030 |
|               |            |            |                                   | 21                               | 4L8A('15)      | 7,816,419   | 1053 |
|               |            |            |                                   | 28                               | H22H('00)      | 9,092,146   | 931  |
|               |            |            |                                   | AB                               | UP0L('12)      | 18,541,055  | 1235 |
| EUROPE        |            |            | MULTI-OPERATOR SINGLE TRANSMITTER |                                  |                |             |      |
| 1.8           | SN3R('07)  | 835,884    | 434                               | AF                               | D4C('15)       | 86,622,448  | 1936 |
| 3.5           | EI7M('10)  | 3,527,075  | 731                               | AS                               | P33W('14)      | 43,457,520  | 1720 |
| 7.0           | EI7M('11)  | 10,787,690 | 1054                              | EU                               | EI7M('14)      | 31,158,736  | 1648 |
| 14            | CS2C('15)  | 10,184,346 | 1249                              | NA                               | VP2EC('92)     | 24,409,580  | 1115 |
| 21            | CR6T('14)  | 10,338,560 | 1312                              | OC                               | KH7X('12)      | 19,038,120  | 1180 |
| 28            | GM7V('00)  | 8,305,756  | 982                               | SA                               | HC8A('93)      | 32,502,677  | 1107 |
| AB            | CQ8X('14)  | 20,759,765 | 1385                              | MULTI-OPERATOR TWO TRANSMITTER   |                |             |      |
| NORTH AMERICA |            |            | AF                                | EB8AH('11)                       | 68,072,520     | 1765        |      |
| 1.8           | VA1A('99)  | 535,225    | 271                               | AS                               | UP2L('14)      | 46,044,068  | 1748 |
| 3.5           | ZF1A('08)  | 2,269,344  | 462                               | EU                               | OL4A('14)      | 36,280,074  | 1774 |
| 7.0           | TI4CF('05) | 8,057,479  | 751                               | NA                               | WP2Z('14)      | 34,886,363  | 1607 |
| 14            | KP2A('95)  | 7,088,976  | 912                               | OC                               | VK4KW('11)     | 26,528,482  | 1369 |
| 21            | VP2EH('11) | 14,899,185 | 1305                              | SA                               | PJ4Z('12)      | 57,741,867  | 1641 |
| 28            | KP2A('00)  | 11,385,710 | 1046                              | MULTI-OPERATOR MULTI-TRANSMITTER |                |             |      |
| AB            | 8P5A('13)  | 27,171,006 | 1429                              | AF                               | CN2AA('15)     | 121,620,720 | 2040 |
|               |            |            |                                   | AS                               | P3A('00)       | 53,554,592  | 1456 |
|               |            |            |                                   | EU                               | ES9C('14)      | 73,120,179  | 205  |
|               |            |            |                                   | NA                               | KL7RA('14)     | 42,051,076  | 1763 |
|               |            |            |                                   | OC                               | KH7R('02)      | 32,806,032  | 1304 |
|               |            |            |                                   | SA                               | HK1NA('13)     | 65,361,128  | 1687 |
| OCEANIA       |            |            |                                   |                                  |                |             |      |
| 1.8           | KH6ND('07) | 26,432     | 59                                |                                  |                |             |      |
| 3.5           | WH7Z('03)  | 1,208,900  | 308                               |                                  |                |             |      |
| 7.0           | ZL3A('08)  | 8,200,800  | 816                               |                                  |                |             |      |

\*Low Power



# 2016-17 calendar

Fifteen spectacular color images of some of the biggest, most photogenic shacks and antennas from across the country and...*also this year...* a number of favorite shots from CQ magazine thrown in for good measure!


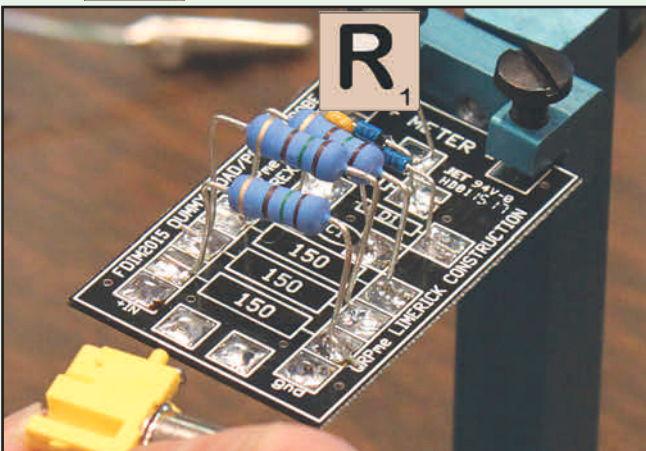
Calendars include dates of important Ham Radio events, major contests and other operating events, meteor showers, phases of the moon, and other astronomical information, plus important and popular holidays. CQ's 15-month calendar (January 2016 through March 2017) is truly a must have!

*15 months of value  
January 2016  
through March 2017*

*Order yours today!*



**C O N T E S T S**  
**A N N U A L**  
**A M A T E U R I A N**  
**N D N T E S**  
**E O A R**  
**N N A S**  
**H A M S**  
**C K S**

**\$10.95**  
plus shipping

Shipping charges:  
USA \$3; Canada/Mexico \$5;  
All other countries \$10.



**CQ Communications, Inc.**



25 Newbridge Road, Hicksville, NY 11801 • <http://store.cq-amateur-radio.com>

## 2015 WPX SSB TOP SCORES

### WORLD

**Single Op All Band High Power**

|                    |            |
|--------------------|------------|
| 8P5A (W2SC).....   | 25,905,964 |
| P40L (W6LD).....   | 25,009,842 |
| CT9/R9DX.....      | 18,755,348 |
| PW2D (PY2LSM)..... | 17,778,221 |
| VY2ZM (K1ZM).....  | 17,675,460 |
| RC90.....          | 16,557,142 |

**Single Op 28 MHz High Power**

|                    |            |
|--------------------|------------|
| ZY2B.....          | 11,611,960 |
| 5W1SA.....         | 3,820,203  |
| ZS9Z (ZS10IN)..... | 3,399,936  |
| OK4PA.....         | 3,396,750  |
| KZ5MM (W5PR).....  | 3,346,354  |

**Single Op 21 MHz High Power**

|                    |           |
|--------------------|-----------|
| CR6T (CT1ESV)..... | 9,226,100 |
| TMO7.....          | 8,206,260 |
| 4L8A.....          | 7,816,419 |

**Single Op 14 MHz High Power**

|                   |           |
|-------------------|-----------|
| CS2C (OK1RF)..... | 9,098,776 |
| ZZ5T (PY3OZ)..... | 6,359,100 |
| YT1A.....         | 6,015,789 |

**Single Op 7 MHz High Power**

|                    |           |
|--------------------|-----------|
| HA4XH.....         | 2,974,785 |
| LZ5K (LZ1RAY)..... | 2,686,599 |
| YT0W (YU1JW).....  | 1,504,821 |

**Single Op 3.7 MHz High Power**

|                    |           |
|--------------------|-----------|
| IH9A (IT9SPB)..... | 3,869,462 |
| YW5T (YV5JBI)..... | 1,608,464 |
| OK1GTH.....        | 1,435,840 |

**Single Op 1.8 MHz High Power**

|           |         |
|-----------|---------|
| S56P..... | 510,776 |
| 4L50..... | 455,816 |
| SN7D..... | 355,696 |

**Single Op All Band Low Power**

|                    |            |
|--------------------|------------|
| FY5FY.....         | 17,380,143 |
| ZF2DX.....         | 13,607,355 |
| EB8AH (OH6RX)..... | 12,715,682 |
| WP2Z (K9VV).....   | 11,949,210 |
| WP4X (NP4Z).....   | 11,748,755 |
| PY1NX.....         | 10,637,925 |

**Single Op 28 MHz Low Power**

|                  |           |
|------------------|-----------|
| TO2A (N6KT)..... | 8,386,956 |
| PY3KN.....       | 5,293,680 |
| CA7CAQ.....      | 3,192,696 |

**Single Op 21 MHz Low Power**

|                    |           |
|--------------------|-----------|
| YV5KG.....         | 4,912,410 |
| J79MM (LY3MM)..... | 4,197,586 |
| KP4BD.....         | 3,455,340 |

**Single Op 14 MHz Low Power**

|                    |           |
|--------------------|-----------|
| TG9ANF.....        | 1,201,910 |
| HG6C (HA6IAM)..... | 1,007,379 |
| AC50.....          | 833,184   |

**Single Op 7 MHz Low Power**

|             |         |
|-------------|---------|
| SP1FFG..... | 424,125 |
| IN3EIS..... | 320,276 |
| UA9SMU..... | 264,576 |

**Single Op 3.7 MHz Low Power**

|             |         |
|-------------|---------|
| DO4CCC..... | 245,526 |
| DL8AKA..... | 166,410 |
| OM6TX.....  | 134,754 |

**Single Op 1.8 MHz Low Power**

|             |        |
|-------------|--------|
| OK1JOK..... | 72,660 |
| E75A.....   | 71,656 |
| HA1TI.....  | 60,060 |

**Single Op All Band High Power Assisted**

|                    |            |
|--------------------|------------|
| CQ3L (DJ80G).....  | 23,505,780 |
| PJ4DX.....         | 23,146,212 |
| PX5E (PP5JR).....  | 22,394,820 |
| UA9MA.....         | 14,137,640 |
| ZX2B (PY2MNL)..... | 13,167,460 |
| RT4F (RK4FD).....  | 13,118,184 |

**Single Op 28 MHz High Power Assisted**

|                   |            |
|-------------------|------------|
| LR1E (LW6DG)..... | 10,492,710 |
| PX2A (PY2EL)..... | 9,210,350  |
| CE2MVF.....       | 5,992,164  |
| LT0H (LU3HY)..... | 5,832,904  |

**Single Op 21 MHz High Power Assisted**

|                    |           |
|--------------------|-----------|
| 4X7R (4X6FR).....  | 6,694,512 |
| OL7M (OK1CID)..... | 6,354,329 |
| OK8NM (OM6NM)..... | 5,848,175 |
| SN2M (SP2XF).....  | 5,804,361 |

**Single Op 14 MHz High Power Assisted**

|                    |           |
|--------------------|-----------|
| S56M.....          | 5,811,880 |
| OL9A (OK2ZAW)..... | 5,335,744 |
| ZV2K (PY2SHF)..... | 4,361,805 |

**Single Op 7 MHz High Power Assisted**

|           |           |
|-----------|-----------|
| SN3A..... | 4,139,492 |
| RA9Y..... | 3,336,580 |
| 9A9R..... | 2,949,786 |

**Single Op 3.7 MHz High Power Assisted**

|                    |           |
|--------------------|-----------|
| OK8WW.....         | 2,154,412 |
| IO4C (IZ4ZAW)..... | 1,769,235 |
| SO9T (SQ9ORQ)..... | 1,304,160 |

**Single Op 1.8 MHz High Power Assisted**

|             |         |
|-------------|---------|
| S570.....   | 364,230 |
| EB1LA.....  | 114,938 |
| YO7LCB..... | 66,993  |

**Single Op All Band Low Power Assisted**

|                     |            |
|---------------------|------------|
| HI3TEJ.....         | 10,187,990 |
| EC2DX.....          | 6,037,074  |
| AZ7E (LU7EC).....   | 4,475,871  |
| VE4VT (VE4EAR)..... | 4,296,285  |
| 4Z6T (4X6TT).....   | 4,011,342  |
| UW5Y (US2YW).....   | 3,932,891  |

**Single Op 28 MHz Low Power Assisted**

|                     |           |
|---------------------|-----------|
| YV1KK.....          | 5,964,246 |
| 9N7CC (SQ9CNN)..... | 3,430,420 |
| LT7F (LU6FOV).....  | 2,971,225 |

**Single Op 21 MHz Low Power Assisted**

|             |           |
|-------------|-----------|
| YY1YLY..... | 3,912,108 |
| CX2CC.....  | 1,934,295 |
| RD0W.....   | 1,669,221 |

**Single Op 14 MHz Low Power Assisted**

|                   |           |
|-------------------|-----------|
| 4Z0DX.....        | 1,040,815 |
| RU5TT (R3TE)..... | 710,950   |
| PY8WW.....        | 607,476   |

**Single Op 7 MHz Low Power Assisted**

|             |           |
|-------------|-----------|
| RC7KY.....  | 1,405,340 |
| OK1UG.....  | 951,660   |
| SP9KDA..... | 886,827   |

**Single Op 3.7 MHz Low Power Assisted**

|             |           |
|-------------|-----------|
| E77C.....   | 1,267,860 |
| OK1WCF..... | 1,077,428 |
| S520T.....  | 750,288   |

**Single Op 1.8 MHz Low Power Assisted**

|             |        |
|-------------|--------|
| EU2EU.....  | 41,097 |
| 9A1IW.....  | 34,727 |
| SQ5ASR..... | 20,256 |

**Single Op All Band QRP**

|                   |         |
|-------------------|---------|
| DL8LR.....        | 699,504 |
| CT1BXT.....       | 673,161 |
| ON4MW.....        | 458,432 |
| RN4HAB.....       | 429,026 |
| W6QU (W8OZA)..... | 399,648 |
| UT5EOX.....       | 297,845 |

**Single Op 28 MHz QRP**

|             |         |
|-------------|---------|
| ZS6DX.....  | 586,756 |
| YB9KA.....  | 302,868 |
| JH7RTQ..... | 230,676 |

**Single Op 21 MHz QRP**

|             |         |
|-------------|---------|
| BA7QT.....  | 260,760 |
| US5ZCW..... | 152,014 |
| UT3EK.....  | 142,546 |

**Single Op 14 MHz QRP**

|                    |         |
|--------------------|---------|
| E72NA.....         | 143,481 |
| I15E (IZ5ZCO)..... | 126,314 |

**Single Op 7 MHz QRP**

|             |        |
|-------------|--------|
| S54MI.....  | 59,365 |
| IZ2JPN..... | 42,432 |
| OK60K.....  | 36,112 |

**Single Op 3.7 MHz QRP**

|           |         |
|-----------|---------|
| E70A..... | 202,920 |
|-----------|---------|

**Single Op 1.8 MHz QRP**

|            |        |
|------------|--------|
| HA5NB..... | 23,533 |
|------------|--------|

**Single Op All Band QRP Assisted**

|                    |           |
|--------------------|-----------|
| ED3V (F4BKV).....  | 1,465,215 |
| OE2S (OE2VEL)..... | 1,439,256 |
| IZ8JFL/1.....      | 829,920   |

**Single Op 28 MHz QRP Assisted**

|             |         |
|-------------|---------|
| JR3RWB..... | 335,652 |
| RU0LAX..... | 118,728 |
| BD5FFK..... | 93,796  |

**Single Op 21 MHz QRP Assisted**

|             |         |
|-------------|---------|
| IZ1ANK..... | 128,712 |
| EI4II.....  | 88,944  |
| KU4A.....   | 29,744  |

**Single Op 14 MHz QRP Assisted**

|                   |         |
|-------------------|---------|
| MW0JRX.....       | 400,821 |
| EE3X (EA3KX)..... | 249,197 |
| UR2Y (US0YW)..... | 204,730 |

**Single Op 7 MHz QRP Assisted**

|               |         |
|---------------|---------|
| YU1XX.....    | 230,421 |
| IZ3IBL/2..... | 146,448 |

**Single Op 3.7 MHz QRP Assisted**

|            |        |
|------------|--------|
| A61BK..... | 11,454 |
|------------|--------|

**Single Op 1.8 MHz QRP Assisted**

|             |        |
|-------------|--------|
| DL2SAX..... | 20,580 |
|-------------|--------|

**Multi-Single High Power**

|           |            |
|-----------|------------|
| P33W..... | 46,017,472 |
| 9Y4W..... | 28,959,840 |
| PJ4Z..... | 28,548,558 |
| TM6M..... | 26,959,088 |
| E17M..... | 25,779,228 |
| E7DX..... | 22,133,344 |

**Multi-Single Low Power**

|            |           |
|------------|-----------|
| HI0UD..... | 6,841,140 |
| ED1B.....  | 6,450,220 |
| SE0X.....  | 3,826,740 |
| KP2DX..... | 2,199,190 |
| NM1C.....  | 2,135,828 |
| 9A9J.....  | 1,882,531 |

**Multi-Two**

|            |            |
|------------|------------|
| D4C.....   | 86,622,448 |
| 5E5E.....  | 78,070,765 |
| CN3A.....  | 75,472,452 |
| ZW5B.....  | 41,079,225 |
| C4A.....   | 37,829,940 |
| 9K2HN..... | 35,322,390 |

**Multi-Multi**

|            |             |
|------------|-------------|
| CN2AA..... | 121,620,720 |
| PJ2T.....  | 63,374,847  |
| 9A1A.....  | 50,875,464  |
| A71BX..... | 46,679,347  |
| LZ9W.....  | 38,598,692  |
| OT5A.....  | 30,060,063  |

**Rookie**

**Single Op All Band High Power**

|             |         |
|-------------|---------|
| F4HIK.....  | 801,210 |
| SE3T.....   | 643,824 |
| K6UN.....   | 508,624 |
| OV3T.....   | 445,614 |
| RW4HD.....  | 267,953 |
| DB5TFP..... | 135,826 |

**Single Op 28 MHz High Power**

|             |        |
|-------------|--------|
| YU2DBZ..... | 61,488 |
| KK6NON..... | 59,625 |

**Single Op 21 MHz High Power**

|             |         |
|-------------|---------|
| UB9SBH..... | 467,364 |
|-------------|---------|

**Single Op 14 MHz High Power**

|             |           |
|-------------|-----------|
| WP4PGY..... | 1,406,784 |
| IT9DBF..... | 979,200   |

**Single Op All Band Low Power**

|             |         |
|-------------|---------|
| KK4TXZ..... | 678,080 |
| DO6LE.....  | 578,920 |
| YY5SSG..... | 485,809 |
| SQ3SWD..... | 342,964 |
| IV3DDN..... | 324,696 |
| ED3T.....   | 308,018 |

**Single Op 28 MHz Low Power**

|             |           |
|-------------|-----------|
| CA7CAQ..... | 3,192,696 |
| HS5SRH..... | 1,026,972 |
| YY4KCV..... | 833,612   |

**Single Op 21 MHz Low Power**

|             |           |
|-------------|-----------|
| YY1YLY..... | 3,912,108 |
| IT9EWR..... | 1,651,545 |
| 9A3BWW..... | 446,250   |

**Single Op 14 MHz Low Power**

|                    |         |
|--------------------|---------|
| IT9DGG.....        | 470,932 |
| I15E (IZ5ZCO)..... | 126,314 |
| YL3IZ.....         | 103,664 |

**Single Op 7 MHz Low Power**

|             |        |
|-------------|--------|
| S54MI.....  | 59,365 |
| YU1SMA..... | 59,189 |

**Single Op 3.7 MHz Low Power**

|             |         |
|-------------|---------|
| 9A5RPZ..... | 194,300 |
| SQ9IWS..... | 23,800  |

**Single Op 1.8 MHz Low Power**

|             |        |
|-------------|--------|
| SO5MAX..... | 13,680 |
|-------------|--------|

**Tribander/Single Element**

**Single Op All Band High Power**

|                    |            |
|--------------------|------------|
| 6Y4W (5B4WN).....  | 15,970,691 |
| ZX2B (PY2MNL)..... | 13,167,460 |
| RJ4P.....          | 8,859,890  |
| LU5FF.....         | 7,653,528  |
| KJ80/4 (N4PN)..... | 6,990,900  |
| HF1T (SP5XVY)..... | 5,772,640  |

**Single Op 28 MHz High Power**

|             |           |
|-------------|-----------|
| 5W1SA.....  | 3,820,203 |
| SV5DKL..... | 2,601,368 |
| PY2MC.....  | 1,983,822 |

**Single Op 21 MHz High Power**

|                   |           |
|-------------------|-----------|
| A65DR.....        | 2,495,050 |
| F4ENK.....        | 1,977,624 |
| AA7CR (W7VO)..... | 1,205,490 |

**Single Op 14 MHz High Power**

|                   |           |
|-------------------|-----------|
| IB1B (W1QN).....  | 3,197,376 |
| PV2P (PY2DY)..... | 2,310,990 |
| IZ0PAU.....       | 1,506,620 |

**Single Op 7 MHz High Power**

|            |           |
|------------|-----------|
| S51CK..... | 1,306,998 |
| 9A1AR..... | 940,416   |
| RD9SA..... | 70,551    |

**Single Op 3.7 MHz High Power**

|                   |           |
|-------------------|-----------|
| SQ2PHG.....       | 1,128,666 |
| YT4A (YT1AA)..... | 1,089,612 |
| EA3CI.....        | 893,628   |

**Single Op 1.8 MHz High Power**

|           |         |
|-----------|---------|
| SN7D..... | 355,696 |
|-----------|---------|

**Single Op All Band Low Power**

|                   |            |
|-------------------|------------|
| ZF2DX.....        | 13,607,355 |
| VE9AA.....        | 6,178,480  |
| LU1FAM.....       | 4,946,568  |
| AZ7E (LU7EC)..... | 4,475,871  |
| DF2F (DF2SD)..... | 3,530,352  |
| 9A1AA.....        | 3,215,691  |

**Single Op 28 MHz Low Power**

|                    |           |
|--------------------|-----------|
| KP2XX.....         | 2,604,400 |
| EF8Z (EA8AVJ)..... | 2,302,060 |
| UN2E.....          | 818,290   |

**Single Op 21 MHz Low Power**

|                    |           |
|--------------------|-----------|
| ED8T (EA8CZQ)..... | 1,811,512 |
| ED8B (EA8CZT)..... | 465,894   |
| UA3ABJ.....        | 455,493   |

**Single Op 14 MHz Low Power**

|                    |           |
|--------------------|-----------|
| HG6C (HA6IAM)..... | 1,007,379 |
| AC50.....          | 833,184   |
| RU5TT (R3TE).....  | 710,950   |

**Single Op 7 MHz Low Power**

|             |         |
|-------------|---------|
| IZ1DGG..... | 261,027 |
|-------------|---------|

|                    |         |
|--------------------|---------|
| DH0DX (DK5TX)..... | 101,430 |
| IZ1JKH.....        | 99,076  |

**Single Op 3.7 MHz Low Power**

|                    |         |
|--------------------|---------|
| DO4CCC.....        | 245,526 |
| YL2GUV.....        | 89,056  |
| EE1X (EB1EVX)..... | 73,947  |

**Single Op 1.8 MHz Low Power**

|            |        |
|------------|--------|
| HA1TI..... | 60,060 |
| 9A1IW..... | 34,727 |
| HA5NB..... | 23,533 |

### UNITED STATES

**Single Op All Band High Power**

|                  |            |
|------------------|------------|
| K1LZ.....        | 14,583,437 |
| WY3P (N3KS)..... | 12,735,408 |
| WW2Y (N2NT)..... | 11,956,284 |
| NV1N (N1UR)..... | 11,085,394 |
| KW7Y (K7RL)..... | 9,299,560  |
| NR5M.....        | 9,134,640  |

**Single Op 28 MHz High Power**

|                     |           |
|---------------------|-----------|
| KZ5MM (W5PR).....   | 3,346,354 |
| KR4Z (N4OX).....    | 2,698,566 |
| WN1GV/4 (N4BP)..... | 485,953   |

**Single Op 21 MHz High Power**

|            |           |
|------------|-----------|
| KU2M.....  | 5,410,098 |
| N7RQ.....  | 2,095,808 |
| W6AFA..... | 1,710,766 |

**Single Op 14 MHz High Power**

|            |           |
|------------|-----------|
| W5WMM..... | 1,854,200 |
| W8TA.....  | 1,331,616 |
| AB1WR..... | 105,216   |

**Single Op 7 MHz High Power**

|           |           |
|-----------|-----------|
| AG4W..... | 1,207,703 |
| AB9H..... | 553,245   |

**Single Op 3.7 MHz High Power**

|            |         |
|------------|---------|
| W3BGN..... | 629,260 |
|------------|---------|

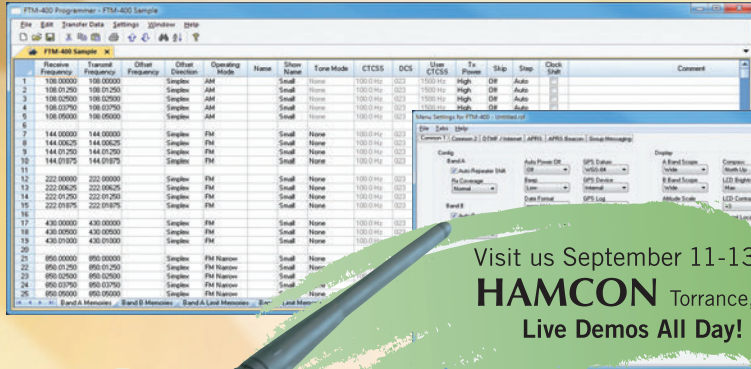
**Single Op All Band Low Power**

|                     |           |
|---------------------|-----------|
| WA1Z.....           | 3,917,912 |
| KM1W (W1UE).....    | 3,392,586 |
| NR3X/4 (N4YDU)..... | 3,266,106 |
| AD4Z.....           | 3,131,352 |
| AD7JP (K2PO).....   | 3,040,053 |
| NA8V.....           | 2,3       |

# Get the Most from Your Radio!

Organize your radio...  
Without having to reset or re-enter!

**rt** SYSTEMS  
RADIO PROGRAMMING  
SOFTWARE KITS



**215**  
209 unique radio Programmers... Check for your radio model at: [www.rtsystems.com](http://www.rtsystems.com)

### Easy Editing Includes:

- All Menu Items
- Sort
- Insert
- Clear Channels
- Delete Channels
- Copy and Paste
- Import

Visit us September 11-13 at:  
**HAMCON** Torrance, CA  
Live Demos All Day!

## Your radio does more than just memories. So does this software.

Available Directly from RT Systems or Your Local Radio Dealer.

**800-476-0719 | [www.rtsystems.com](http://www.rtsystems.com)**  
Personal Assistance: Mon.-Fri., 8:00-5:00, Sat. 9:00-1:00 Mountain Time

|  |  |                                      |                                      |                                     |
|--|--|--------------------------------------|--------------------------------------|-------------------------------------|
| AA7CR (W7V0).....1,205,490                   | <b>Single Op All Band QRP</b>          | AC3U/4.....13,294,804                | <b>Single Op 14 MHz High Power</b>   | DK3T (DK3EE).....3,033,780          |
| W2S2 (W1MAT).....496,386                     | W6QU (W8QZA).....399,648               | NE1C.....13,292,710                  | KD8SQ.....82,519                     | S57DX.....2,249,182                 |
| <b>Single Op 14 MHz High Power Assisted</b>  | KA8SMA.....215,325                     | <b>Rookie</b>                        | W8GOC.....40,248                     | <b>Single Op 21 MHz High Power</b>  |
| K3EST/6.....2,553,395                        | KT8K.....185,942                       | <b>Single Op All Band High Power</b> | <b>Single Op All Band Low Power</b>  | CR6T (CT1ESV).....9,226,100         |
| W4ANT.....75,115                             | N3WD.....184,992                       | K6UN.....508,624                     | KT4ZB.....2,214,201                  | TM0T.....8,206,260                  |
| N2NS/6.....27,068                            | W8VK.....43,361                        | N9LIS.....100,800                    | WX1S.....1,454,432                   | R3BM.....4,359,684                  |
| <b>Single Op 7 MHz High Power Assisted</b>   | K0TC.....33,866                        | KD0WWH.....92,964                    | W8BTLI.....1,369,235                 | <b>Single Op 14 MHz High Power</b>  |
| WB0LJK.....32,100                            | <b>Single Op 28 MHz QRP</b>            | NU6Y.....91,632                      | W2RDS.....1,267,415                  | CS2C (OK1RF).....10,184,346         |
| <b>Single Op All Band Low Power Assisted</b> | WA6FGV.....137,182                     | KM4CPA.....48,800                    | K6GHA.....1,060,375                  | HA8JV.....5,278,140                 |
| K4DMR.....2,706,432                          | W1TEF/4.....22,113                     | <b>Single Op 28 MHz High Power</b>   | N8IL.....994,280                     | SO4M (SP5UAF).....4,013,435         |
| N5D0.....2,700,976                           | <b>Single Op 21 MHz QRP</b>            | KK6NON.....59,625                    | <b>Single Op 28 MHz Low Power</b>    | <b>Single Op 7 MHz High Power</b>   |
| WW45F (N4XL).....2,406,768                   | K2GMY/6.....60,225                     | K90MW.....31,458                     | K2PF.....51,221                      | HA4XH.....2,974,785                 |
| KS1J.....2,250,736                           | KG7RZ.....30,360                       | <b>Single Op All Band Low Power</b>  | K90MW.....31,458                     | LZ5K (LZ1RAY).....2,686,599         |
| KT4ZB.....2,214,201                          | <b>Single Op All Band QRP Assisted</b> | KK4TXZ.....678,080                   | <b>Single Op 21 MHz Low Power</b>    | YT0W (YU1JW).....1,504,821          |
| WX1S.....1,454,432                           | K3WW.....543,144                       | K6KNS.....192,750                    | KM4HI.....363,527                    | <b>Single Op 3.7 MHz High Power</b> |
| <b>Single Op 28 MHz Low Power Assisted</b>   | W1NT.....438,416                       | KG5FRS.....188,325                   | KC0DEB.....327,295                   | OK1GTH.....1,435,840                |
| K4MDX.....241,400                            | AK8H.....230,421                       | KE6DM.....175,560                    | A15AA.....248,626                    | YT4A (YT1AA).....1,089,612          |
| KD2HXI.....33,372                            | K3TW/4.....78,430                      | W3VYK.....121,458                    | <b>Single Op 14 MHz Low Power</b>    | EA3CI.....893,628                   |
| <b>Single Op 21 MHz Low Power Assisted</b>   | <b>Single Op 21 MHz QRP Assisted</b>   | W6AOZ.....111,400                    | AC50.....833,184                     | <b>Single Op 1.8 MHz High Power</b> |
| N9TGR.....1,227,808                          | KU4A.....29,744                        | <b>Single Op 28 MHz Low Power</b>    | NW3H.....151,165                     | S56P.....510,776                    |
| KC0DEB.....327,295                           | <b>Multi-Single High Power</b>         | KD2HXI.....33,372                    | NW4V.....53,650                      | SN7D.....355,696                    |
| AE7DW.....49,896                             | K0DU.....12,702,210                    | <b>Single Op 21 MHz Low Power</b>    | <b>Single Op 7 MHz Low Power</b>     | DF2DJ.....263,032                   |
| <b>Single Op 14 MHz Low Power Assisted</b>   | K6ND/1.....9,916,028                   | AE7DW.....49,896                     | WN4AFP.....48,508                    | <b>Single Op All Band Low Power</b> |
| NW3H.....151,165                             | KX7M/6.....7,181,952                   | <b>Single Op 14 MHz Low Power</b>    | WA3EQJ.....22,428                    | OM2VL.....7,198,514                 |
| NS3T.....64,296                              | NO2F.....5,767,125                     | W4KMR.....15,664                     | <b>Single Op 3.7 MHz Low Power</b>   | S50A.....5,771,688                  |
| NW4V.....53,650                              | WV1K.....4,947,012                     | <b>Tribander/Single Element</b>      | KG9Z/8.....38,599                    | 9A5Y (9A7DX).....5,008,830          |
| <b>Single Op 7 MHz Low Power Assisted</b>    | KE2VB/7.....3,748,134                  | <b>Single Op All Band High Power</b> | WN7RRX.....23,544                    | UW5Q (UR3QCW).....4,438,164         |
| NW3H.....151,165                             | <b>Multi-Single Low Power</b>          | KJ80/4 (N4PN).....6,990,900          | <b>EUROPE</b>                        | LY5R (LY9A).....3,751,840           |
| NS3T.....64,296                              | NM1C.....2,135,828                     | NA1DX/3.....4,268,748                | <b>Single Op All Band High Power</b> | E11A (ON4E1).....3,383,921          |
| NW4V.....53,650                              | W3HAC.....532,416                      | W5K.....3,475,060                    | 9A73A (9A1UN).....15,992,015         | <b>Single Op 28 MHz Low Power</b>   |
| <b>Single Op 3.7 MHz Low Power Assisted</b>  | NQ1C.....208,120                       | NF4A.....3,140,180                   | ES7V.....13,610,592                  | YT8A (YU1EA).....1,444,995          |
| KO3T.....181,280                             | <b>Multi-Two</b>                       | N6JV.....2,828,952                   | RW1A.....13,502,292                  | IF9/IT9PPG.....654,594              |
| <b>Single Op 21 MHz Low Power Assisted</b>   | KD4D/3.....20,266,175                  | AD5XD.....2,783,304                  | UA2F (UA2FB).....12,153,302          | HG0R (HA0NAR).....645,932           |
| NW3H.....151,165                             | NN3U/4.....14,075,950                  | <b>Single Op 28 MHz High Power</b>   | OE3K (OM3BH).....11,570,020          | SX3B (SV1BDO).....629,748           |
| NS3T.....64,296                              | W6CH.....13,534,600                    | WN1GIV/4 (N4BP).....485,953          | ED1R (EC1KR).....11,518,032          | <b>Single Op 21 MHz Low Power</b>   |
| <b>Single Op 3.7 MHz Low Power Assisted</b>  | KR7X.....7,777,978                     | K4EU.....26,136                      | <b>Single Op 28 MHz High Power</b>   | EE7Y (EC7WA).....3,122,472          |
| KO3T.....181,280                             | NX6T.....7,661,646                     | <b>Single Op 21 MHz High Power</b>   | OK4PA.....3,396,750                  | IR9W (IW0HBY).....2,569,652         |
| <b>Multi-Multi</b>                           | AJ7G/4.....4,573,996                   | AA7CR (W7V0).....1,205,490           |                                      | IT9EWR.....1,651,545                |
| WX3B.....22,193,804                          |  | K7YK.....715,387                     |                                      |                                     |
|  |  | N6YG.....96,600                      |                                      |                                     |



|                                   |           |
|-----------------------------------|-----------|
| <b>Single Op 14 MHz Low Power</b> |           |
| HG6C (HA6IAM).....                | 1,007,379 |
| S57PKT.....                       | 710,892   |
| UT8UF.....                        | 688,160   |

|                                  |         |
|----------------------------------|---------|
| <b>Single Op 7 MHz Low Power</b> |         |
| SP1FPG.....                      | 424,125 |
| IN3EIS.....                      | 320,276 |
| IZ1DGG.....                      | 261,027 |

|                                    |         |
|------------------------------------|---------|
| <b>Single Op 3.7 MHz Low Power</b> |         |
| D04CC.....                         | 245,526 |
| DL8AKA.....                        | 166,410 |
| OM6TX.....                         | 134,754 |

|                                    |        |
|------------------------------------|--------|
| <b>Single Op 1.8 MHz Low Power</b> |        |
| OK1JOK.....                        | 72,660 |
| E75A.....                          | 71,656 |
| HA1TI.....                         | 60,060 |

|   |            |
|---|------------|
| <b>Single Op All Band High Power Assisted</b> |            |
| RT4F (RK4FD).....                             | 13,118,184 |
| ER4A (UT5UDX).....                            | 11,367,356 |
| IW2HAJ.....                                   | 10,635,666 |
| S55T (S57AL).....                             | 10,261,086 |
| UW1M.....                                     | 9,514,200  |
| RJ4P.....                                     | 8,859,890  |

|   |           |
|---|-----------|
| <b>Single Op 28 MHz High Power Assisted</b> |           |
| EB7QE.....                                  | 3,874,650 |
| DH8BQA.....                                 | 2,790,429 |
| SV5DKL.....                                 | 2,601,368 |

|   |           |
|---|-----------|
| <b>Single Op 21 MHz High Power Assisted</b> |           |
| OL7M (OK1CID).....                          | 6,354,329 |
| OK8NM (OM6NM).....                          | 5,848,175 |
| SN2M (SP2XF).....                           | 5,804,361 |

|   |           |
|---|-----------|
| <b>Single Op 14 MHz High Power Assisted</b> |           |
| S56M.....                                   | 5,811,880 |

|                    |           |
|--------------------|-----------|
| OL9A (OK2ZAW)..... | 5,335,744 |
| IK0PHY.....        | 4,057,059 |

|  |           |
|--|-----------|
| <b>Single Op 7 MHz High Power Assisted</b> |           |
| SN3A.....                                  | 4,139,492 |
| 9A9R.....                                  | 2,949,786 |
| S56X.....                                  | 2,289,771 |

|  |           |
|--|-----------|
| <b>Single Op 3.7 MHz High Power Assisted</b> |           |
| OK8WW.....                                   | 2,154,412 |
| I04C (IZ4ZAW).....                           | 1,769,235 |
| S09T (SQ9ORQ).....                           | 1,304,160 |

|  |         |
|--|---------|
| <b>Single Op 1.8 MHz High Power Assisted</b> |         |
| S570.....                                    | 364,230 |
| EB1LA.....                                   | 114,938 |
| Y07LCB.....                                  | 66,993  |
| YU0T.....                                    | 66,044  |

|  |           |
|--|-----------|
| <b>Single Op All Band Low Power Assisted</b> |           |
| EC2DX.....                                   | 6,037,074 |
| UW5Y (US2YW).....                            | 3,932,891 |
| ES5Q (ESSRY).....                            | 3,905,676 |
| DF2F (DF2SD).....                            | 3,530,352 |
| 9A1AA.....                                   | 3,215,691 |
| LZ2HM.....                                   | 2,910,336 |

|  |           |
|--|-----------|
| <b>Single Op 28 MHz Low Power Assisted</b> |           |
| I0UZF.....                                 | 1,257,893 |
| IZ8EYP.....                                | 840,840   |
| Z39A.....                                  | 776,640   |

|  |           |
|--|-----------|
| <b>Single Op 21 MHz Low Power Assisted</b> |           |
| F4GGQ.....                                 | 1,077,870 |
| LZ2HA.....                                 | 906,612   |
| YU1NNN.....                                | 556,416   |

|  |         |
|--|---------|
| <b>Single Op 14 MHz Low Power Assisted</b> |         |
| RU5TT (R3TE).....                          | 710,950 |
| RZ3Z.....                                  | 543,924 |
| IT9DGG.....                                | 470,932 |

|   |           |
|---|-----------|
| <b>Single Op 7 MHz Low Power Assisted</b> |           |
| RC7KY.....                                | 1,405,340 |
| OK1UG.....                                | 951,660   |
| SP9KDA.....                               | 886,827   |

|   |           |
|---|-----------|
| <b>Single Op 3.7 MHz Low Power Assisted</b> |           |
| E77C.....                                   | 1,267,860 |
| OK1WCF.....                                 | 1,077,428 |
| S520T.....                                  | 750,288   |

|   |        |
|---|--------|
| <b>Single Op 1.8 MHz Low Power Assisted</b> |        |
| EU2EU.....                                  | 41,097 |
| 9A11W.....                                  | 34,727 |
| SQ5ASR.....                                 | 20,256 |

|                               |         |
|-------------------------------|---------|
| <b>Single Op All Band QRP</b> |         |
| DL8LR.....                    | 699,504 |
| CT1BXT.....                   | 673,161 |
| ON4MW.....                    | 458,432 |
| RN4HAB.....                   | 429,026 |
| UT5EOX.....                   | 297,845 |
| 9A7JZC.....                   | 294,206 |

|                             |         |
|-----------------------------|---------|
| <b>Single Op 28 MHz QRP</b> |         |
| IZ5JLF.....                 | 107,844 |
| YT3TPS.....                 | 104,340 |
| I5KAP.....                  | 90,951  |

|                             |         |
|-----------------------------|---------|
| <b>Single Op 21 MHz QRP</b> |         |
| US5ZCW.....                 | 152,014 |
| UT3EK.....                  | 142,546 |
| SY1AEA.....                 | 53,720  |

|                             |         |
|-----------------------------|---------|
| <b>Single Op 14 MHz QRP</b> |         |
| E72NA.....                  | 143,481 |
| I15E (IZ5ZCO).....          | 126,314 |

|                            |        |
|----------------------------|--------|
| <b>Single Op 7 MHz QRP</b> |        |
| S54MI.....                 | 59,365 |
| IZ2JPN.....                | 42,432 |
| OK6OK.....                 | 36,112 |

|                              |         |
|------------------------------|---------|
| <b>Single Op 3.7 MHz QRP</b> |         |
| E70A.....                    | 202,920 |

|                              |        |
|------------------------------|--------|
| <b>Single Op 1.8 MHz QRP</b> |        |
| HA5NB.....                   | 23,533 |

|  |           |
|--|-----------|
| <b>Single Op All Band QRP Assisted</b> |           |
| ED3V (F4BKV).....                      | 1,465,215 |
| OE2S (OE2VEL).....                     | 1,439,256 |
| IZ8JFL/1.....                          | 829,920   |
| CT1GVN.....                            | 258,669   |
| GX5XV (G7KXZ).....                     | 215,373   |
| OK2FD.....                             | 175,337   |

|                                      |        |
|--------------------------------------|--------|
| <b>Single Op 28 MHz QRP Assisted</b> |        |
| YP8A (Y08WW).....                    | 77,280 |
| M10LLG.....                          | 52,390 |
| 9A2VX.....                           | 34,882 |

|                                      |         |
|--------------------------------------|---------|
| <b>Single Op 21 MHz QRP Assisted</b> |         |
| IZ1ANK.....                          | 128,712 |
| EI4II.....                           | 88,944  |
| IZ3NVR.....                          | 21,462  |

|                                      |         |
|--------------------------------------|---------|
| <b>Single Op 14 MHz QRP Assisted</b> |         |
| MW0JRX.....                          | 400,821 |
| EE3X (EA3KX).....                    | 249,197 |
| UR2Y (US0YW).....                    | 204,730 |

|                                     |         |
|-------------------------------------|---------|
| <b>Single Op 7 MHz QRP Assisted</b> |         |
| YU1XX.....                          | 230,421 |
| IZ3IBL/2.....                       | 146,448 |

|                                       |        |
|---------------------------------------|--------|
| <b>Single Op 1.8 MHz QRP Assisted</b> |        |
| DL2SAX.....                           | 20,580 |

|                                |            |
|--------------------------------|------------|
| <b>Multi-Single High Power</b> |            |
| TM6M.....                      | 26,959,088 |
| EI7M.....                      | 25,779,228 |
| E7DX.....                      | 22,133,344 |
| IR4M.....                      | 20,522,778 |
| 9A7A.....                      | 19,254,210 |
| OM7M.....                      | 18,632,412 |

|                               |           |
|-------------------------------|-----------|
| <b>Multi-Single Low Power</b> |           |
| ED1B.....                     | 6,450,224 |
| SE0X.....                     | 3,826,740 |
| 9A9J.....                     | 1,882,531 |
| 9A6V.....                     | 1,118,124 |
| IQ3BM.....                    | 1,085,784 |
| OT5X.....                     | 867,678   |

|                  |            |
|------------------|------------|
| <b>Multi-Two</b> |            |
| I19P.....        | 32,073,864 |
| DQ8N.....        | 25,501,298 |
| HG7T.....        | 24,172,905 |
| PI4DX.....       | 19,825,940 |
| DM9K.....        | 18,055,134 |
| SX9C.....        | 17,929,049 |

|                    |            |
|--------------------|------------|
| <b>Multi-Multi</b> |            |
| 9A1A.....          | 50,875,464 |
| LZ9W.....          | 38,598,692 |
| OT5A.....          | 30,060,063 |
| OH1F.....          | 25,534,112 |
| LY7A.....          | 17,699,512 |
| DP6T.....          | 13,690,468 |

|                                      |         |
|--------------------------------------|---------|
| <b>Rookie</b>                        |         |
| <b>Single Op All Band High Power</b> |         |
| F4HIK.....                           | 801,210 |
| SE3T.....                            | 643,824 |
| OV3T.....                            | 445,614 |
| RW4HD.....                           | 267,953 |
| DB5TPF.....                          | 135,826 |
| IZ8LMA.....                          | 78,186  |

|   |        |
|---|--------|
| <b>Single Op 28 MHz High Power Assisted</b> |        |
| YU2DBZ.....                                 | 61,488 |

|                                    |         |
|------------------------------------|---------|
| <b>Single Op 14 MHz High Power</b> |         |
| IT9DBF.....                        | 979,200 |

|  |         |
|--|---------|
| <b>Single Op All Band Low Power Assisted</b> |         |
| D06LE.....                                   | 578,920 |
| SQ3SWD.....                                  | 342,964 |
| IV3DDN.....                                  | 324,696 |
| ED3T.....                                    | 308,018 |
| IT9FRX.....                                  | 296,208 |
| IZ2YAF.....                                  | 293,408 |

|                                   |         |
|-----------------------------------|---------|
| <b>Single Op 28 MHz Low Power</b> |         |
| YU1EXY (YU5EEA).....              | 307,490 |
| M10LLG.....                       | 52,390  |
| SV1ONW.....                       | 24,232  |

|                                   |           |
|-----------------------------------|-----------|
| <b>Single Op 21 MHz Low Power</b> |           |
| IT9EWR.....                       | 1,651,545 |
| 9A3BWW.....                       | 446,250   |
| HF6T.....                         | 133,864   |

|                                   |         |
|-----------------------------------|---------|
| <b>Single Op 14 MHz Low Power</b> |         |
| IT9DGG.....                       | 470,932 |
| I15E (IZ5ZCO).....                | 126,314 |
| YL3IZ.....                        | 103,664 |

|                                  |        |
|----------------------------------|--------|
| <b>Single Op 7 MHz Low Power</b> |        |
| S54MI.....                       | 59,365 |
| YU1SMA.....                      | 59,189 |

|                                    |         |
|------------------------------------|---------|
| <b>Single Op 3.7 MHz Low Power</b> |         |
| 9A5RPZ.....                        | 194,300 |
| SQ9IWS.....                        | 23,800  |

|                                      |           |
|--------------------------------------|-----------|
| <b>Tribander/Single Element</b>      |           |
| <b>Single Op All Band High Power</b> |           |
| RJ4P.....                            | 8,859,890 |
| HF1T (SP5XVY).....                   | 5,772,640 |
| IZ8FVN.....                          | 4,988,822 |
| LZ3ZZ.....                           | 4,857,919 |
| S57C.....                            | 4,536,000 |
| EW8QQ.....                           | 4,310,352 |

|                                    |           |
|------------------------------------|-----------|
| <b>Single Op 28 MHz High Power</b> |           |
| SV5DKL.....                        | 2,601,368 |
| DJ6QT.....                         | 1,206,414 |
| IK3TTP.....                        | 767,270   |

|                                    |           |
|------------------------------------|-----------|
| <b>Single Op 21 MHz High Power</b> |           |
| F4ENK (GM7VSB).....                | 1,977,624 |
| MM8Z (GM7VSB).....                 | 598,570   |
| HA0HW.....                         | 46,512    |

|                                    |           |
|------------------------------------|-----------|
| <b>Single Op 14 MHz High Power</b> |           |
| IB1B (IW1QN).....                  | 3,197,376 |
| IZ0PAU.....                        | 1,506,620 |
| I01X (IW1FPK).....                 | 1,207,323 |

|                                   |           |
|-----------------------------------|-----------|
| <b>Single Op 7 MHz High Power</b> |           |
| S51CK.....                        | 1,306,998 |
| 9A1AR.....                        | 940,416   |

|                                     |           |
|-------------------------------------|-----------|
| <b>Single Op 3.7 MHz High Power</b> |           |
| SQ2PHG.....                         | 1,128,666 |
| YT4A (YT1AA).....                   | 1,089,612 |
| EA3CI.....                          | 893,628   |

|                                     |         |
|-------------------------------------|---------|
| <b>Single Op 1.8 MHz High Power</b> |         |
| SN7D.....                           | 355,696 |

|                                     |           |
|-------------------------------------|-----------|
| <b>Single Op All Band Low Power</b> |           |
| DF2F (DF2SD).....                   | 3,530,352 |
| 9A1AA.....                          | 3,215,691 |
| OR2F.....                           | 2,825,768 |
| UR6EA.....                          | 2,737,374 |
| RW4WA.....                          | 2,610,925 |
| OK5ZZ.....                          | 2,110,878 |

|                                   |         |
|-----------------------------------|---------|
| <b>Single Op 28 MHz Low Power</b> |         |
| HG0R (HA0NAR).....                | 645,932 |
| SX3B (SV1BDO).....                | 629,748 |
| CT2IVH.....                       | 621,522 |

|                                   |         |
|-----------------------------------|---------|
| <b>Single Op 21 MHz Low Power</b> |         |
| UA3ABJ.....                       | 455,493 |
| OE5JSL.....                       | 209,526 |
| IW5ECP.....                       | 165,480 |

|                                   |           |
|-----------------------------------|-----------|
| <b>Single Op 14 MHz Low Power</b> |           |
| HG6C (HA6IAM).....                | 1,007,379 |
| RU5TT (R3TE).....                 | 710,950   |
| RZ3Z.....                         | 543,924   |

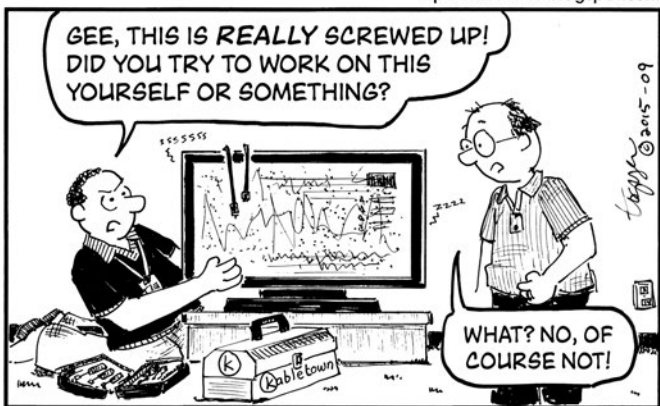
|                                  |         |
|----------------------------------|---------|
| <b>Single Op 7 MHz Low Power</b> |         |
| IZ1DGG.....                      | 261,027 |
| DH0DX (DK5TX).....               | 101,430 |
| IZ1JKH.....                      | 99,076  |

|                                    |         |
|------------------------------------|---------|
| <b>Single Op 3.7 MHz Low Power</b> |         |
| D04CC.....                         | 245,526 |
| YL2GUW.....                        | 89,056  |
| EE1X (EB1EVX).....                 | 73,947  |

|                                    |        |
|------------------------------------|--------|
| <b>Single Op 1.8 MHz Low Power</b> |        |
| HA1TI.....                         | 60,060 |
| 9A11W.....                         | 34,727 |
| HA5NB.....                         | 23,533 |

## SPURIOUS SIGNALS

By Jason Togyer KB3CNM  
spuriouscomic.blogspot.com



© 2015 Jason Togyer — jtogyer@gmail.com — CQ Magazine — spuriouscomic.blogspot.com

